



FLARE™ WINDSHIELD FOR HD ROAD GLIDE



EMAIL:
info@getklocked.com

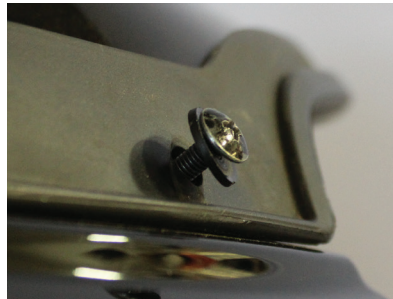


CALL:
(605) 996-3700

FOR 2015+ FLTR



1. Loosen, but do not remove, the four windshield mounting screws and gently remove your windshield



2. Ensure the washers on each mounting screw are out toward the head of the screws



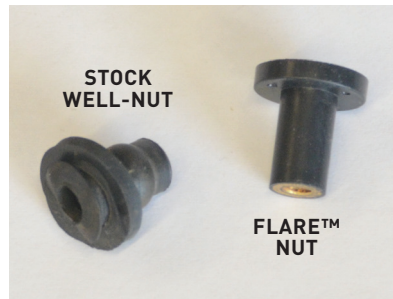
3. Install your new Flare™ Windshield onto the mounting screws and torque to factory specifications

FOR 98-13 FLTR



1. Remove all five windshield fasteners and remove your windshield

NOTE Reinstallation of the stock weather stripping is not required



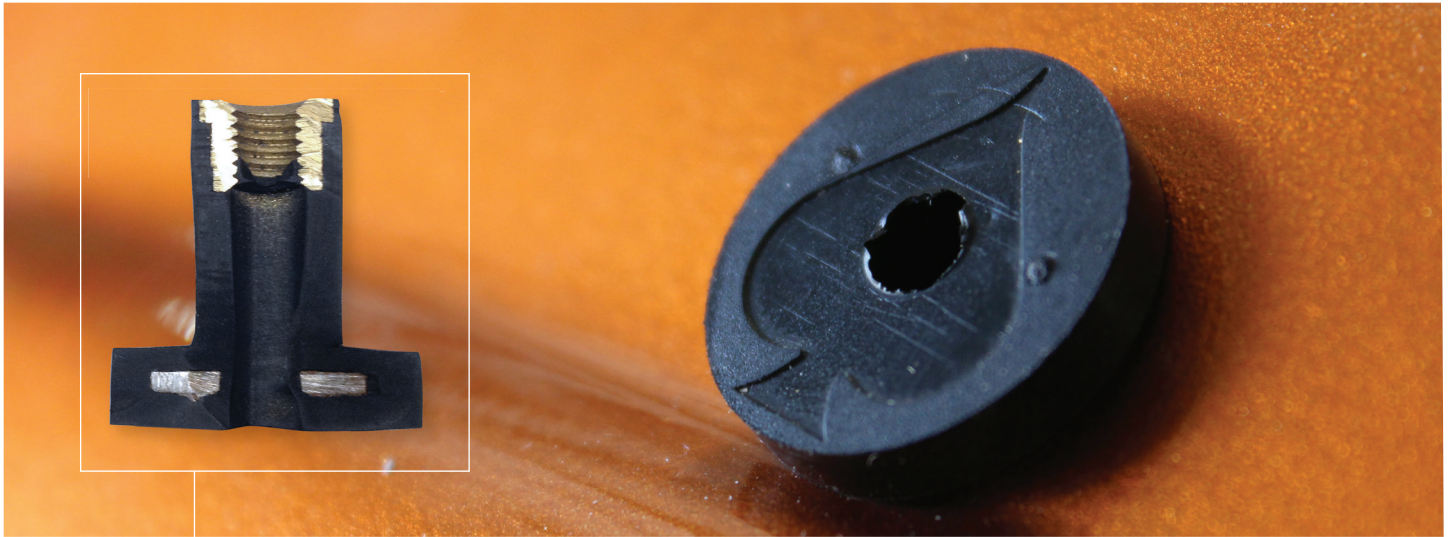
2. Check the well-nuts in the fairing, if they are damaged or broken, Klock Werks offers a replacement kit (part number 2404-0548) for \$29.95



3. Starting with the center screw, install your new Flare™ Windshield and torque to factory specifications.

Klock Werks cannot be held responsible for any damage resulting from improper installation performed by any consumer or their dealer.

MORE WAYS TO KLOCK YOURSELF OUT



FLARE™ NUTS FOR 98-13 FLTR

Factory well-nuts are prone to failure after a few uses. Klock Werks Flare™ Nuts are manufactured out of a superior material and have a revolutionary design, including a metal washer molded into the flange to prevent the well-nut from pushing through the windshield mounting hole and ending up inside your fairing. In addition, we've added a superior brass threaded insert that tightens the well-nut, but allows for continuous installation and removal.

- // The best replacement well-nut for your Road Glide.
- // Shoulder molded on to brass insert to prevent pull through
- // Metal washer molded into flange to prevent well-nut from pushing through fairing



KLOCK WERKS KLEANING PRODUCTS

We tested many products, and found a company that would combine what we like and remove what we didn't like to create a complete Kleaning product line-up.

- // The recommended cleaner for your Flare™ Windshield
- // Proprietary concoction designed by REAL riders
- // Protects surfaces while repelling dirt
- // Complete line for all finishes
- // Clean, Shine, and protect - just about anything.

U.S. Pat. No. D586,274; D632,235; D586,275; D633,017; D626,046; D633,018 Pat. 001050165-0001, 001050165-0002, 001050165-0003 APO No. 324093, 324094, 325192

KLOCK WERKS // GETKLOCKED.COM